

# Phenolic Core

Solid phenolic core is composed of compressed cellulose fibers impregnated with resins. The surface laminate is fused to the resin-impregnated core. All edges are machined and finished smooth with a 15-degree beveled edge. Material will not delaminate even under extreme conditions. Materials are non-absorbent, impact and graffiti resistant. Materials are impervious to steam, soaps and detergents and will not mildew.

## MATERIAL

Mills® phenolic core partitions are perfect for high traffic areas where durability, strength and finish options are needed. Its impact resistance and superior strength are a result of high heat and high-pressure molding of solid phenolic core material with a decorative melamine surface.

19 standard phenolic colors or patterns are available. Almost any Formica, Wilsonart, or Trespa color or pattern can be ordered.

## PRODUCTS

Sentinel™ overhead-braced partitions, floor-braced partitions, ceiling-hung partitions, floor-to-ceiling partitions, urinal screens.

## APPLICATIONS INCLUDE

Outdoor parks, pools, shower rooms or any application where oil, water or bacteria resistance is needed. Phenolic partitions withstand wet and humid environments and are ideal for hose-down cleaning.

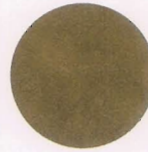
## Phenolic Colors



Autumn Indian Slate  
3687-58



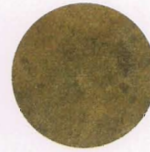
Cotta Stone  
7266-58



Earth Wash  
7213-58



Labrador Granite  
3692-58



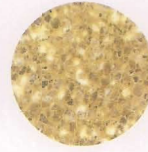
Madras Indian Slate  
3688-58



Natural Canvas  
7022-58



Navy Grafix  
7018-58



Sand Crystall  
3517-58



Sienna Terra  
7216-58



Stone Grafix  
503-58



Almond  
920-58



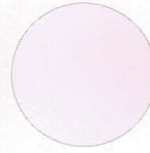
Black  
909-58



Folkstone  
927-58



Indian Smoke  
913-58



White  
949-58



Acajou Mahogany  
7008-58



Amber Maple  
7012-58



Wild Cherry  
5904-58

## NOTE:

Due to printing variances, actual color of the material may differ. Contact your Bradley representative for actual material samples.

# Actual pattern distribution within the product and between products may vary slightly.