

hadrian®



# Powder Coated Color Card

- NEW, faster shipping programs
- Industry-best fire resistance
- High recycled content
- Anti-graffiti finishes



**IN THE U.S.A.:**

**Hadrian Inc.**

7420 Clover Avenue, Mentor, Ohio, U.S.A. 44060

3602 West Washington Street, Suite 200, Phoenix, Arizona, U.S.A. 85009

T: (440) 942 9118 F: (440) 942 9618

U.S. toll free fax: 1 800 536 1469

**IN CANADA AND AREAS OTHER THAN U.S.A.:**

**Hadrian Manufacturing Inc.**

965 Syscon Road, Burlington, Ontario, Canada L7L 5S3

T: (905) 333 0300 F: (905) 333 1841

Canada toll free fax: 1 800 817 7701

[www.hadrian-inc.com](http://www.hadrian-inc.com)

Hadrian reserves the right to change colors and/or finishes without prior notice.

No.10-108 9/2016

# Powder Coated Color Card

Colors shown are approximations only and are not intended for actual color selection. For accurate color matches, refer to Hadrian's printed color card.

## SOLID COLORS



535 Light Grey   



541 Extra White



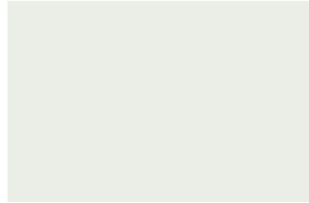
603 Almond  



607 Bordeaux



621 Slate 



504 Linen  



532 Latte 



576 Ruby Red



545 Charcoal 



500 White



585 Sahara 



581 Moss Green




510 Black 





639 Sapphire Blue



609 Colonial Blue 

 Headrail braced toilet partitions available for Premium Quick Ship in USA; subject to upcharge.

 Headrail braced, ceiling hung (for 9 ft ceilings and lower) and floor mounted toilet partitions available for Quick Ship in USA.

 Headrail braced toilet partitions available for Quick Ship in Canada.

## ANTI-GRAFFITI COLORS (SUBJECT TO UPCHARGE)

Proven ASTM D6578 Graffiti Resistance to easily remove:  
 • Permanent Marker • Lipstick • Water Based Ink Marker • Wax Crayon • Spray Paint



833 Tricorn Black  
SUBJECT TO UPCHARGE



828 Dovetail  
SUBJECT TO UPCHARGE



829 Desert  
SUBJECT TO UPCHARGE



826 Kilim Beige  
SUBJECT TO UPCHARGE

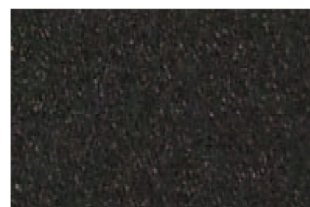
## SPECIAL EFFECTS COLORS (SUBJECT TO UPCHARGE)



837 Black Fox  
SUBJECT TO UPCHARGE



831 Nickel Metallic  
SUBJECT TO UPCHARGE



814 Cast Iron Metallic  
SUBJECT TO UPCHARGE

**STAINLESS STEEL TOILET PARTITIONS**  
 Headrail braced type 304, #4 brushed and embossed stainless steel toilet partitions are available for Quick Ship and Premium Quick Ship in USA. Lockers are not available in stainless steel.

**CUSTOM COLORS**  
 For custom colors, a minimum of 20 units for toilet partitions and 100 units for lockers is required per color. Custom colors are subject to upcharge.